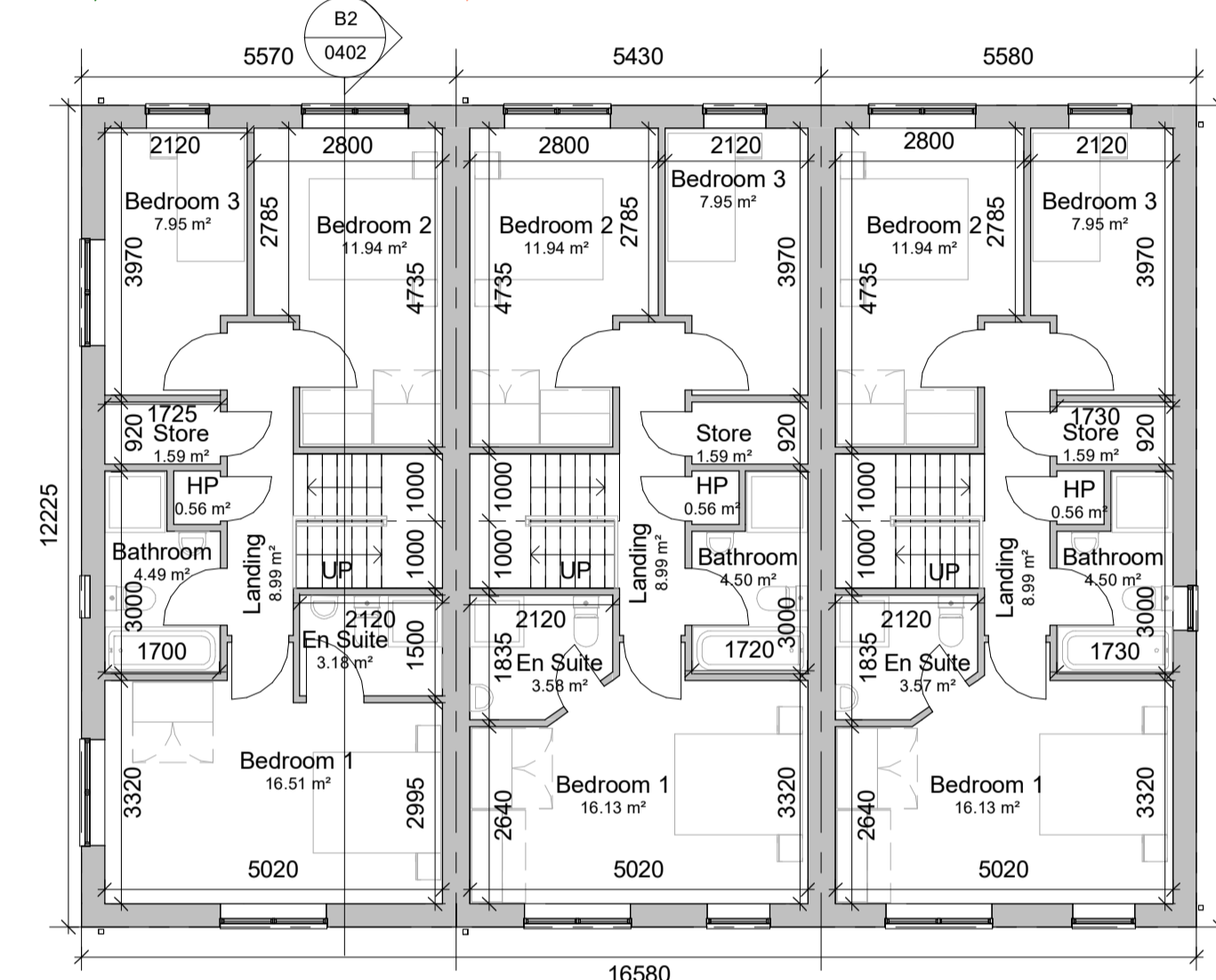
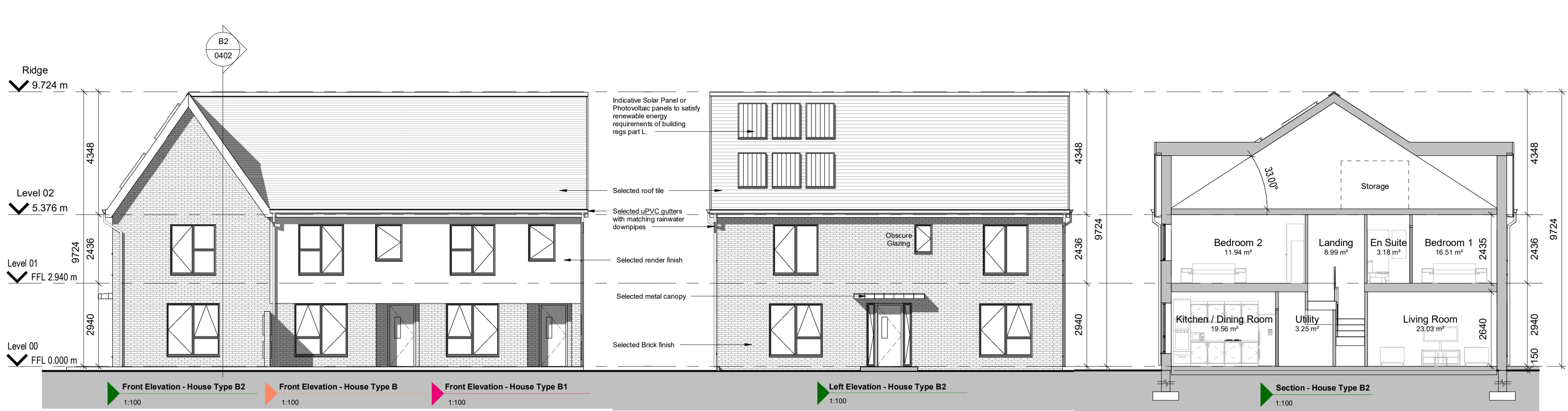
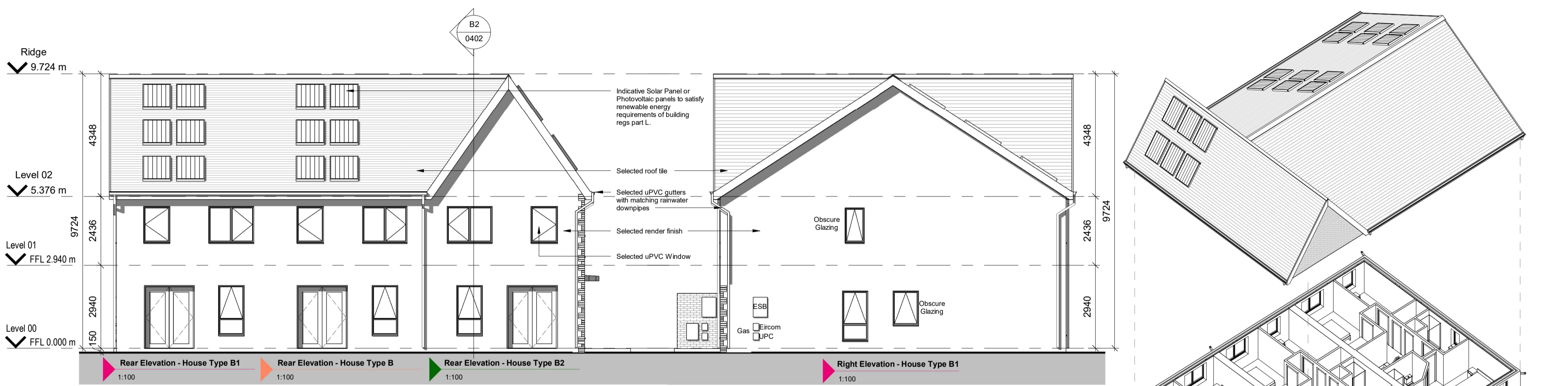


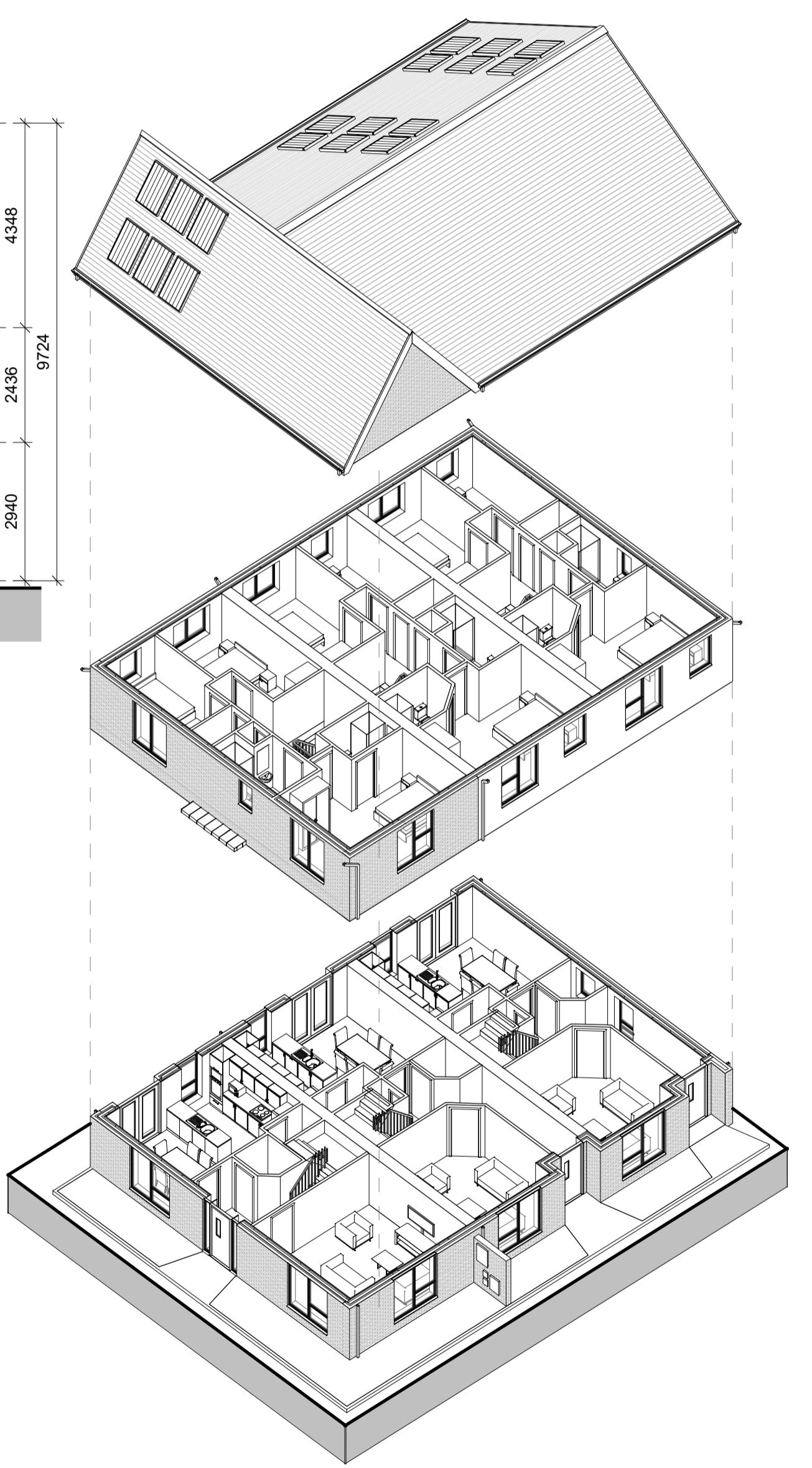
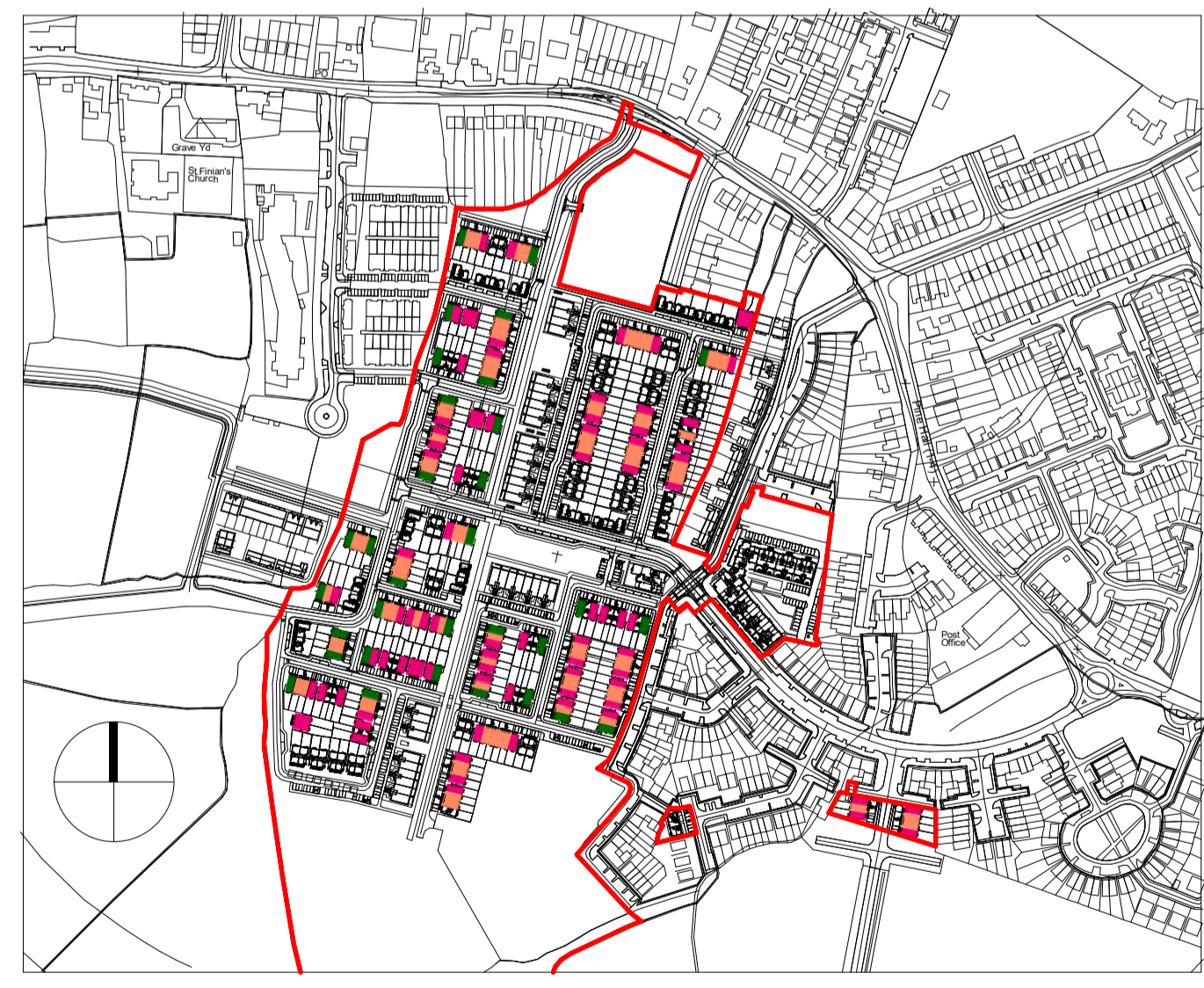
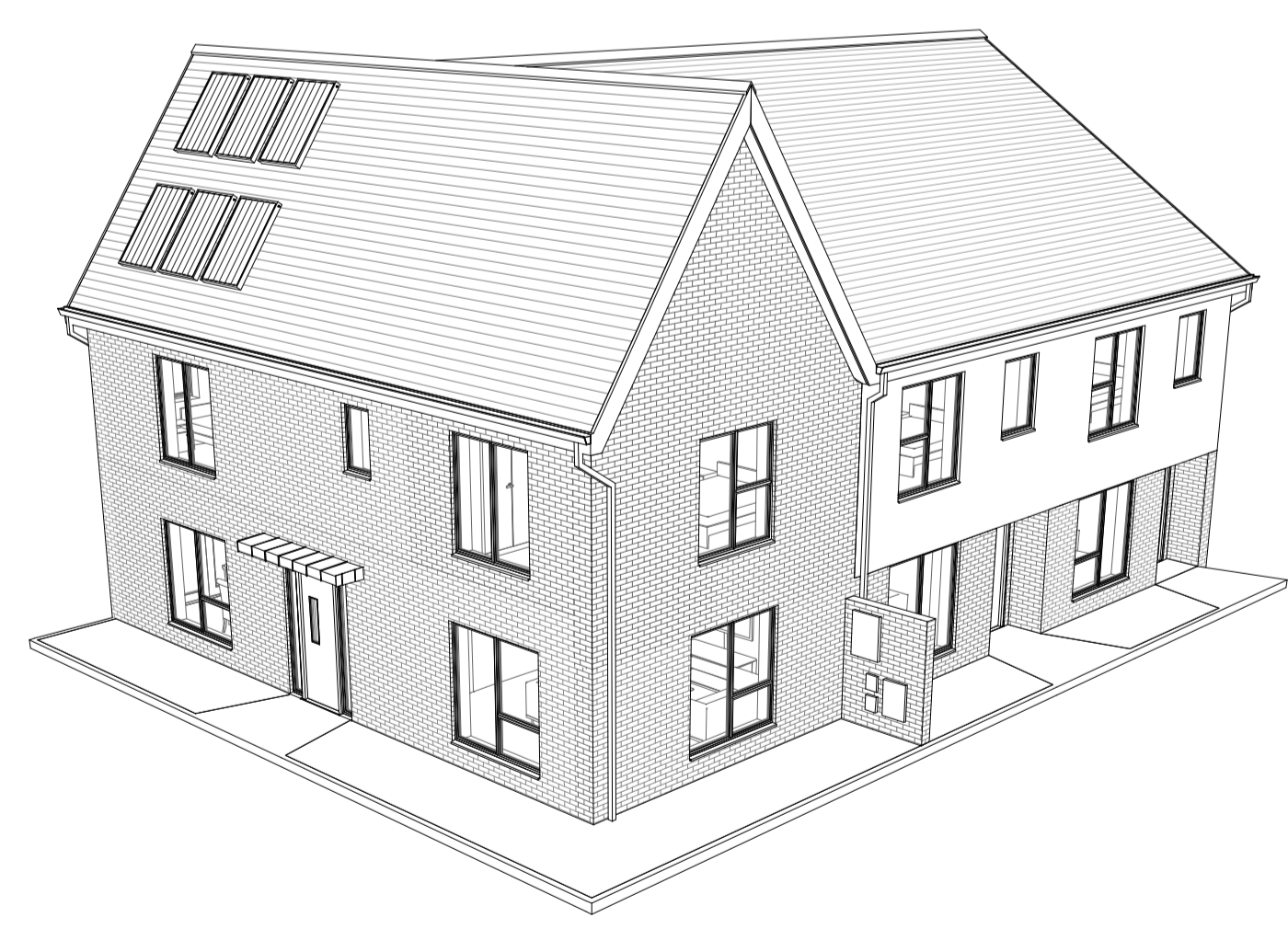
House Type B2 - 3No. Bedrooms	
Room Name	Room Area
<b>Level 00</b>	
Hallway	5.67 m <sup>2</sup>
Kitchen / Dining Room	19.56 m <sup>2</sup>
Living Room	23.03 m <sup>2</sup>
Utility	3.25 m <sup>2</sup>
WC	2.25 m <sup>2</sup>
<b>Level 01</b>	
Bathroom	4.49 m <sup>2</sup>
Bedroom 1	16.51 m <sup>2</sup>
Bedroom 2	11.94 m <sup>2</sup>
Bedroom 3	7.95 m <sup>2</sup>
En Suite	3.18 m <sup>2</sup>
HP	0.56 m <sup>2</sup>
Landing	8.99 m <sup>2</sup>
Store	1.59 m <sup>2</sup>
Aggregate Living Area	42.59m <sup>2</sup>
Ground Floor GIFA	57.91m <sup>2</sup>
Aggregate Bed Area	36.40m <sup>2</sup>
First Floor GIFA	57.91m <sup>2</sup>
Attic Storage	2.80m <sup>2</sup>
Total Storage	7.64m <sup>2</sup>
<b>Total Floor Area = 115.82m<sup>2</sup></b>	



House Type B - 3No. Bedrooms	
Room Name	Room Area
<b>Level 00</b>	
Hallway	8.22 m <sup>2</sup>
Kitchen / Dining Room	20.80 m <sup>2</sup>
Living Room	16.66 m <sup>2</sup>
Store	0.67 m <sup>2</sup>
Utility	3.46 m <sup>2</sup>
W.C	2.23 m <sup>2</sup>
<b>Level 01</b>	
Bathroom	4.50 m <sup>2</sup>
Bedroom 1	16.13 m <sup>2</sup>
Bedroom 2	11.94 m <sup>2</sup>
Bedroom 3	7.95 m <sup>2</sup>
En Suite	3.58 m <sup>2</sup>
HP	0.56 m <sup>2</sup>
Landing	8.99 m <sup>2</sup>
Store	1.59 m <sup>2</sup>
Aggregate Living Area	37.46m <sup>2</sup>
Ground Floor GIFA	56.70m <sup>2</sup>
Aggregate Bed Area	36.02m <sup>2</sup>
First Floor GIFA	57.91m <sup>2</sup>
Attic Storage	2.80m <sup>2</sup>
Total Storage	8.52m <sup>2</sup>
<b>Total Floor Area = 114.61m<sup>2</sup></b>	



House Type B1 - 3No. Bedrooms	
Room Name	Room Area
<b>Level 00</b>	
Hallway	8.25 m <sup>2</sup>
Kitchen / Dining Room	20.80 m <sup>2</sup>
Living Room	16.66 m <sup>2</sup>
Store	0.67 m <sup>2</sup>
Utility	3.46 m <sup>2</sup>
W.C	2.24 m <sup>2</sup>
<b>Level 01</b>	
Bathroom	4.50 m <sup>2</sup>
Bedroom 1	16.13 m <sup>2</sup>
Bedroom 2	11.94 m <sup>2</sup>
Bedroom 3	7.95 m <sup>2</sup>
En Suite	3.57 m <sup>2</sup>
HP	0.56 m <sup>2</sup>
Landing	8.99 m <sup>2</sup>
Store	1.59 m <sup>2</sup>
Aggregate Living Area	37.46m <sup>2</sup>
Ground Floor GIFA	56.70m <sup>2</sup>
Aggregate Bed Area	36.02m <sup>2</sup>
First Floor GIFA	57.91m <sup>2</sup>
Attic Storage	2.80m <sup>2</sup>
Total Storage	8.52m <sup>2</sup>
<b>Total Floor Area = 114.61m<sup>2</sup></b>	



NOTES / LEGEND

Rev:	Date:	Description:	By:
1	01/09/2019	PLANNING ISSUE	MOLA

Rev:	Date:	Description:	By:
1	01/09/2019	PLANNING ISSUE	MOLA

Drawing Status: Planning Application  
 Reply Address: 2 Donnybrook Road, Telephone +353 1 218 3900, Donnybrook, Dublin 4, Ireland, www.molaarchitecture.com

**MOLA**  
 ARCHITECTS ■ PLANNERS ■ URBAN DESIGNERS ■  
 Client: Cairn Homes Properties Ltd.  
 Project: Newcastle South  
 Drawing: House Type B / B1 / B2  
 Date: 01/09/2019 Scale: As Indicated Drawn By: CJ Approved By: NN Int. Job No: 18001  
 Project No: NCS18- MOLA-00- ZZ- DR- A- XX 0402 P 1  
 © COPYRIGHT This drawing or design may not be reproduced without permission